



WAIKĪKĪ IMPROVEMENT ASSOCIATION

Wikiwiki Wire

E-newsletter keeping you up-to-date on Waikīkī news, features, trends and more!



Contents

3

ALA WAI FLOOD RISK
MANAGEMENT GENERAL
REEVALUATION STUDY

5

HO'OWEHIWEHI AWARDS

7

DUKE'S OCEANFEST IS BACK!

9

WAIKĪKĪ HULA SHOW

10

STREET ACTIVITY IN & NEAR
WAIKĪKĪ

MORE WAIKĪKĪ NEWS, EVENTS & FOOD

HALEKULANI LEWERS LOUNGE - NEW LINE UP
IN AUGUST!

2022 HALEPUNA WAIKIKI SUMMER PROGRAM

FOOD GURUS - HAWAII'S RESTAURANT
MARKETING SPECIALIST

HAWAI'I CONVENTION CENTER LAUNCHES
CARBON OFFSET PROGRAM FOR MEETINGS,
EVENTS

IL LUPINO TRATTORIA & WINE BAR

GET YOUR TIKI ON! INTERNATIONAL MARKET
PLACE HOSTS MIXOLOGY MONTH IN AUGUST

A LIVE INTERACTIVE EXPERIENCE - THE
SEARCH FOR SNOOPY: A PEANUTS
ADVENTURE

ISLAND VINTAGE COFFEE

HO'OLAUNA ALOHA HULA FESTIVAL GOES
LIVE AT WAIKIKI BEACH WALK

PAC RIM MARKETING ENDORSES RESTAURANT
SUNSTORY JAPANESE CUISINE

GET "LAKI" AT ROYAL HAWAIIAN CENTER THIS
AUGUST

JESSICA MICHELLE SINGLETON AT TEX808
BBQ & BREWS

THE WAIKIKI SHOPPING PLAZA INDUSTRY
PARKING, SHOPPING AND DINING

WOLFGANG'S STEAKHOUSE - NOW SERVING
BREAKFAST DAILY

Ala Wai Flood Risk Management General Reevaluation Study

The re-boot of the U.S. Army Corps of Engineers (USACE) Ala Wai Flood Control Project has begun with an Ala Wai Flood Risk Management General Re-Evaluation Study. In the next phase of the process, the City and County of Honolulu in partnership with the U.S. Army Corps of Engineers (USACE) will hold two public workshops to present results of the study process to date, present an initial array of alternative plans, and gather community input and feedback.

The first public workshop was conducted virtually on Wednesday July 26, 2022. The USACE presented a variety of options being considered in managing flood control. The Hybrid/Combined plan included:



INITIAL ARRAY: ALT 5 – HYBRID/COMBINED PLAN



Cornerstone:

1. Manoa District Park Detention
2. Woodlawn Bypass
3. Ala Wai Canal Floodwalls

Additional Measures:

4. Woodlawn Floodwall
5. Koali Road Floodwall
6. Makiki District Park Detention
7. Kanaha Floodwall
8. Palolo District Park Channel Mod.
9. Pumps/other structures (flap gates) (not shown)
10. Nonstructural to reduce residual risk (not shown)

A complete list of alternative plans for consideration is available at: <http://www.honolulu.gov/AlaWai>.

The project is strongly supported Mayor Rick Blangiardi's administration. The Mayor himself and many of the city's administrators took part in the workshop. Attended by a variety of community members that have actively followed the project, the participants lauded the USACE efforts to engage the community.

The options that received the most community interest included:

1. Storage
2. Other Structural Measures
 - A. Bypasses / Existing Infrastructure
 - B. Floodwalls
 - C. Second Canal Outlet
3. Tunnels

NOW ACCEPTING
NOMINATIONS



WAIKĪKĪ IMPROVEMENT ASSOCIATION

2022 Ho'owehiwehi Awards

Honoring those in the community whose projects possess the key components of the Revitalization of Waikiki plan which began in 2001

There are four award categories:

Hana Nui Award NEW OR MAJOR PROJECTS

Aimed at NEW or MAJOR reconstruction, development, transformation or project(s). Recognizes a company, organization or group for its significant contribution toward the enduring revitalization of Waikiki's physical, cultural and/or economic environment. Represents consistent, ongoing achievements, body of work or project completed between September 1, 2021 and August 31, 2022.

Hana Iki Award RENOVATION PROJECTS

Aimed at RENOVATION projects that enhance structures or facilities. Recognizes a company, organization or group for a significant contribution toward the enduring revitalization of Waikiki's physical, cultural and/or economic environment. Represents improvements to a particular structure or environment completed between September 1, 2021 and August 31, 2022.



WAIKĪKĪ IMPROVEMENT ASSOCIATION

2022 Ho'owehiwehi Awards

Pili Honua Award GREEN PROJECTS

This award category recognizes green, earth-friendly projects or people! This category recognizes new and renovated projects, along with hotel operations, that embody the goals and aspirations of living GREEN in Hawai'i that help to preserve our precious `aina and saves our valuable resources. All projects are eligible for the Pili Honua award.

Dr. George S. Kanahale HO'OKIPA AWARD

Highly regarded historian Dr. George S. Kanahale was the driving force in a movement to restore a sense of "Hawaiianess" to Waikiki. He founded the Native Hawaiian Hospitality Association, and helped numerous corporate clients integrate Hawaiian values into their management and customer relations practices. This award recognizes an individual, business, organization or group for an outstanding singular action, event or for consistent, enduring performance in keeping with the legacy of the late George Sanford Kanahale. The award is given to a person, project or place that best represents the values of aloha and ho`okipa (hospitality) embodied in Dr. Kanahale's life work. This award covers a wide range of categories, from social and cultural endeavors to health, education and communications programs. Emphasis is on personal commitment and excellence. Can be person, project or place.

Applications for nominations due September 2, 2022.

[Click here to apply.](#)

Awards will be presented at our annual meeting on Oct 26th, 2022.

Duke's OceanFest is Back!

CELEBRATING ITS 20TH ANNIVERSARY, WAIKĪKĪ'S PREMIER OCEAN SPORTS FESTIVAL RETURNS ON AUGUST 20-28, 2022



WAIKĪKĪ BEACH – Following a two-year hiatus due to the COVID-19 pandemic, Duke's OceanFest – Waikīkī's Premier Ocean Sports Festival – is back and celebrating its 20th anniversary with eight days of events and competitions taking place August 20th-28th.

OceanFest is a fun and festive tribute to the life and legacy of Duke Paoa Kahanamoku, Hawai'i's legendary Olympic champion, surfing pioneer and Ambassador of Aloha. In his prime, Kahanamoku was the world's fastest swimmer and the single-most influential person in promoting surfing worldwide. The 20th annual Duke's OceanFest will feature exciting ocean and beach competitions during the anniversary week of Duke Kahanamoku's birthday (August 24, 1890).

"Come join us at the one-of-a-kind Lei Draping and Opening Ceremony on August 22nd. Sign up for the Duke's Waikiki Ocean Mile Swim, encounter Dog Surfing or just come down to enjoy all the activities throughout the week that honors Duke and shares his spirit of Aloha," said Co-Host Chris Colgate. "Most competitions and events are taking place at Queen's Surf on Kūhiō Beach in Waikīkī, a favorite surfing spot of Duke's, and home to the magnificent statue honoring his lifetime of achievements."

WAIKIKI NIGHTS has always been a unique part of Duke's OceanFest. This year, WAIKIKI NIGHTS will be showing the extraordinary and memorable film, WATERMAN, presented By OHA in association with Raw Element. It's FREE and open to the public on August 25th, 7:00 pm at the Duke's statue.

This original documentary by award winning Sidewinder Films is narrated by Jason Momoa and directed by Isaac Halasima. It features commentary from surfing's biggest stars, including newly crowned Olympic gold medalist Carissa Moore. WATERMAN explores Duke's journey and legacy as a legendary swimmer, trailblazer, five-time Olympic medalist and the undisputed father of modern-day surfing. Native Hawaiian Duke Paoa Kahanamoku shattered records and brought surfing to the world while overcoming a lifetime of personal challenges."

Later in life, Duke Kahanamoku was revered as Hawai'i's Ambassador of Aloha. Captured in his own words, he conveyed the power of the Aloha Spirit in the following, known as Duke's Creed:

"In Hawai'i we greet friends, loved ones and strangers with Aloha, which means with love. Aloha is the key word to the universal spirit of real hospitality, which makes Hawai'i renowned as the world's center of understanding and fellowship. Try meeting or leaving people with Aloha. You'll be surprised by their reaction. I believe it and it is my creed. Aloha to you."

Duke's OceanFest supports the Outrigger Duke Kahanamoku Foundation (ODKF) with proceeds from the event helping to support ODKF's scholarships and grants directed at Hawai'i residents and nonprofit groups competing in 'Duke related' sports.

All competitions and events for Duke's OceanFest are being staged at Kūhiō Beach, Queen's Surf in Waikīkī, fronting Duke Kahanamoku's statue.

Please visit DukesOceanfest.com for the complete festival schedule.

For questions or other information, please email info@dukesoceanfest.com.



Waikiki Hula Show

AT THE KUHIO BEACH HULA MOUND

WEDNESDAYS AND SATURDAYS, 6:30-7:30 PM, WEATHER-PERMITTING

Authentic Hawaiian music and hula by Hawaii's finest Halau Hula (dance troupes) and Hawaiian performers. Opens with traditional blowing of conch shell.

DETAILS

- Located on the ocean side of Kalakaua Avenue near the Duke Kahanamoku Statue, diagonally across from the Hyatt Regency hotel.
- Free, outdoors, casual, seating on the grass; beach chairs, mats, etc. okay. Cameras welcomed.
- No show if parades or street fairs are scheduled.

Presented by HLTA/Hawaii Tourism, Hyatt Regency Waikiki Beach Resort & Spa, City & County of Honolulu and the Waikiki Improvement Association.

For information, call 808-843-8002.



STREET ACTIVITY

IN AND NEAR WAIKĪKĪ (COURTESY OF THE CITY)

ANNUAL OAHU HEART WALK 4.5M & 1M

August 6, 2022 Saturday

6:30 AM Lanes Close

11:00 AM Lanes Reopen (Approximate)

ANNUAL OAHU HEART WALK 4.5M & 1M sponsored by the American Heart Association. It is expected to have 2,500 walkers. The event will start at Queen Kapiolani Park, to Kalakaua Ave., to Monsarrat Ave., Paki Ave., to Kalakaua Ave., to end at the ewa tennis courts of Queen Kapiolani Park (3 loops). Contact: Gabrielle Buist 212-7417; Email: gabrielle.buist@heart.org For more info, visit their website: <http://www.oahuheartwalk.org>

NORMAN K. TAMANAHA 15K

August 14, 2022 Sunday

5:30 AM Lanes Close

10:00 AM Lanes Reopen (Approximate)

NORMAN K. TAMANAHA 15K sponsored by MPRRC. The event is expected to have 500 participants. It will start at Queen Kapiolani Regional Park near the Tennis Courts, to Kalakaua Ave., to Monsarrat Ave., to Paki Ave., to Diamond Head Rd., to 18th Ave., to Kilauea Ave., to Waiālae Ave., to Kealaou Ave., to Kahala Ave., to Diamond Head Rd., to Kalakaua Ave., to end at Marathon Finish Line. Contact: Joan Davis 535-9070, Email: joaniediva1@gmail.com For more info, visit their website at: www.mprrc.com

STREET ACTIVITY

IN AND NEAR WAIKĪKĪ (COURTESY OF THE CITY) CONT.

43rd ANNUAL VISITOR INDUSTRY CHARITY WALK

August 20, 2022 Saturday

7:30 AM Lanes Close

1:00 PM Lanes Reopen (Approximate)

43rd ANNUAL VISITOR INDUSTRY CHARITY WALK sponsored by Hawaii Hotel Industry Assn. The event will have 7,000 runners/walkers. It will start at Ala Moana Park's McCoy Pavilion Key Hole area, clockwise around Ala Moana Park, to Ala Moana Blvd., mauka sidewalk area, to Ala Wai Promenade area, to Kalakaua Ave., makai side, crossover to mauka side sidewalk at King Kalakaua Park, to cross Kalakaua Ave. at Seaside Ave. to turnaround at Ohua Ave., to Kalakaua Ave. makai side ewa bound direction, to Lewers St., to Kalia Rd., to Ala Moana Blvd., to end at Ala Moana Park's McCoy Pavilion Key Hole area. Contact: Jared Higashi 923-0407 Fax: 924-3843 E-mail: jhigashi@hawaiilodging.org For more info, visit their website:<http://www.charitywalkhawaii.org>



Lewers Lounge

New lineup in August!

For more information, please call 808-518-2019. Walk-ins welcome



ART OF WELLBEING PRESENTATIONS - AUGUST

- August 13: Acupuncture – An Eastern Approach to Medicine
 - Understand this ancient practice and the countless benefits it brings today.
- August 27: Deep Sleep Solutions
 - Review how quality sleep or lack thereof, impacts your health and wellbeing. Walk away with practical tips for getting the rest you need.

The 75-minute discussion are open to the public and are \$25 per person. Please call 808-931-5322 for more information and to reserve a spot.

Halekulani Okinawa Dessert Promotion

Our sister hotel, the luxurious Halekulani Okinawa, located along the beautiful coastal waters of the Okinawa Kaigan Quasi-National Park in Onna Village, recently attained the 2022 Forbes Travel Guide's Annual 5-Star rating, the first 5-Star hotel on Okinawa.

In commemoration of this award, starting on Monday, July 25th, for a limited time, Orchids will be promoting two of Halekulani Okinawa's signature desserts:

- **Brown Sugar Cheesecake** – With Walnut Graham Cracker, served with a Ruby Peach Sorbet and Raspberry Coulis.
- **Pavlova** – A Meringue, served with Coconut Sorbet, Cream Chantilly, and a Tropical Fruit Compote. (Featured at Steak & Wine KINGDOM, Halekulani Okinawa).

These special desserts, along with the current dessert selections, will be available on the Orchids lunch and dinner menu and will be similarly priced at \$13 each. For more information or to reserve a table at Orchids, please call 808-518-2019.





2022 HALEPUNA WAIKIKI SUMMER PROGRAM

June 21 – September 22, 2022

Summer has officially started at Halepuna Waikiki! Guests are able to enjoy a special daily activity such as lei making, hula lessons or attending The Bishop Museum, Honolulu Museum of Art, KCC Farmer's Market, and our Wine Mixer.

Please contact the Guest Relations Desk for more information and to sign-up.



KAMA'AINA RATE

- \$255 + taxes daily with upgrade to Waikiki Mountain based on availability at time of check-in (single / double occupancy)
- Guaranteed 4pm late checkout
- Complimentary daily self-parking
- Halepuna Access – Complimentary access to the Honolulu Museum of Art & The Bishop Museum
- Fitness Classes
- Complimentary WiFi and NO resort fees

Call 808-445-9595 to reserve your room today!



PUNA MAI TAI

August 30th is National Mai Tai Day. Enjoy our signature drink created by our very own Cocktail Extraordinaire, Tuda Grehan:

- | | |
|------------------------------------|------------------------|
| 1 ½ oz Hawaiian Rum Agricole Blend | ¾ oz Float of Dark Rum |
| ¼ oz Coconut Syrup | Muddled Orange |
| 1 ¼ oz Pineapple Juice | Calamansi Lime Juice |
| ½ oz Pierre Ferrand Dry Curacao | |

Shake and strain into prepped coconut sugar rim glass with new ice. Float ½ oz Old Lahaina Dark Rum. Garnish with dehydrated pineapple and cherry pick.

HAWAII'S RESTAURANT MARKETING SPECIALIST

Communication | Creative & Production | Digital | Marketing



fg
FOOD GURUS
HAWAII



COMPLIMENTARY CONSULTATION

Phone: (808) 946-4626 email: doug@digivortex.com website: FoodGurusUsa.com



Hawai'i Convention Center Launches Carbon Offset Program for Meetings, Events

The Hawai'i Convention Center is launching a first-of-its-kind program that provides carbon offset opportunities for all meetings and events.

The program provides meeting organizers with the opportunity to offset the carbon footprint of their meeting, as well as offer individual attendees the ability to select and plant endemic and native trees virtually or in-person. These efforts are part of the Center's Ho'omalūō (to conserve or manage wisely) conservation program. Ho'omalūō guides the Center's leadership in environmental best practices, including energy consumption, water use and waste diversion.

The Center's carbon offset program is also in alignment with the Hawai'i Tourism Authority's (HTA) vision of Mālama Ku'u Home (Caring for My Beloved Home). HTA's objective is to help empower the community to have a greater voice in tourism's future, with a focus on regenerating the environment, perpetuating the Hawaiian culture, recognizing Hawai'i's multiethnic cultures and supporting responsible economic outcomes.

The Center has offered its One Million Trees initiative since 2016, partnering with the statewide nonprofit Hawaiian Legacy Reforestation Initiative (HLRI) to reforest native and endemic trees in Hawai'i. The Center's new carbon offset program is offered through Hawai'i-based Legacy Carbon, which is dedicated to providing the highest-quality, cost-effective certified carbon offsets in the world. The program has been certified by the prestigious Switzerland-based Gold Standard Foundation and is the first forestry project in North America to issue Gold Standard credits.



The Hawai'i Convention Center's carbon footprint was calculated by Greenview in partnership with Legacy Carbon. Greenview is a sustainability firm that provides hospitality organizations with research, consulting and advisory services, as well as the leading online sustainability data platform.

To learn more about the carbon offset program, visit the Center's website or e-mail info@hccasm.com.



IL LUPINO

TRATTORIA & WINE BAR

Start your day off deliciously with breakfast at Il Lupino! From our signature Smoked Salmon & Lobster Benedict to our Acai Bowl, Omelettes, Belgian Waffle, Pancakes, Loco Moco, and more, it's the best way to start your day! Or join us for an authentic Italian lunch or dinner featuring dishes made with fresh, local produce, the highest quality imported ingredients, and fresh pasta made in-house daily, as well as exquisite desserts, and a Wine Spectator Award-winning wine list.

Dine-In • Take-Out • Delivery
Breakfast 7am-12pm
Appetizers & Pizza 11am - 10pm
Happy Hour 1pm - 6pm at the Bar
Dinner 4pm - 10pm

Royal Hawaiian Center
Bldg B, Level 1
Validated Parking

808.922.3400
illupino.com
opentable.com



INTERNATIONAL MARKET PLACE

Get Your Tiki On! International Market Place Hosts Mixology Month in August



Annual Celebration of “Cocktail Culture” includes Tiki-versary, Battle of the Bartenders, a Don Ho Tribute and more

In a grand celebration of “cocktail culture,” **International Market Place** and its collection of popular shops, eateries and chef-driven restaurants will welcome diners to Mixology Month in August. The month-long celebration is the perfect way for residents and visitors experience to specially priced cocktails and appetizers at participating restaurants throughout the month of August.

This includes delicious and refreshing summer libations from the International Market Place’s extraordinary eateries, including Hawai’i’s hottest restaurants like **Moani Waikiki** and **Skybox Taphouse** and unique-to-market concepts like **StripSteak Waikiki** from award-winning chef Michael Mina and **Eating House 1849 by Roy Yamaguchi**. **Kuhio Avenue Food Hall**, **Shorefyre**, **Drybar** and **Herringbone** also are participating.

Live musical entertainment is planned at several venues, as is a “Tiki In Waikiki” festival and Battle of the Bartenders. On August 13 a Don Ho “Suck ‘Em Up” tribute show and special archival photo installation will highlight his birthday celebration event.

The schedule of **Mixology Month** events includes:

- **August 1-31: Enjoy specially priced cocktails and appetizers** at participating restaurants.
- **August 1-31: Tiki Cup Gift with Purchase.** Spend \$250 or more in combined receipts and receive an IMP Tiki Cup.



- **Saturday, August 13: Don Ho's Birthday: Celebrate the legendary Don Ho!**

- 10 a.m. Lei draping ceremony at the statue, Banyan Court, Level 1
- Noon to 1 p.m.: Don Ho Tribute Show, Queen's Court, Level 1
- 5 to 7 p.m.: Archival photo installation, Banyan Court, Level 2

- **Wednesday, August 17: Battle of the Bartenders.**

Contestants from Shorefyre, Skybox, Moani, StripSteak, Herringbone and Drybar pour it on in a stiff competition at Queen's Court.

- **Thursday, August 25: IMP Anniversary Day.** Make a Lei for our Birthday! Join us for lei-making in the Queen's Court, Level 1.
- **August 26-28: Tiki In Waikiki Festival.** Tickets required.

"We are pleased to bring back Mixology Month and grateful for the support we continue to receive from visitors and residents. This celebration gets better each year and is something our outlets look forward to," said Malia Zannoni, marketing & sponsorship director, International Market Place. "International Market Place reopened in 2016 and our 'Tiki-versary' is truly special. It's a fresh take on the IMP experience that pays tribute to our heritage and Old Waikiki."

From poi mochi donuts to poke bowls and kal-bi ribs to kampachi crudo, the International Market Place is home to Waikīkī's largest collection of restaurants, cafes quick bites, and open-air dining with many locally owned and operated eateries. Its Grand Lānai restaurants offer both indoor and outdoor seating at all establishments.

For more information, visit <https://shopinternationalmarketplace.com>

A **LIVE** INTERACTIVE
EXPERIENCE!



The Search For
SNOOPYTM
A PEANUTS Adventure

ALA  MOANA
HAWAII'S CENTER.



Tickets Now
on Sale!



searchforsnoopy.com

Island Vintage Coffee patrons get 10% off tickets!

handcrafted aloha



Give your loved ones the gift of farm-to-table deliciousness. The Island Vintage Coffee Gift Card may be used at all of our casual eateries throughout Hawai'i.

WAIKĪKĪ LOCATIONS

ISLAND VINTAGE COFFEE*

Royal Hawaiian Center
808.926.5662
Daily 6:00am - 10:00pm
islandvintagecoffee.com
[@islandvintagecoffee](https://www.instagram.com/islandvintagecoffee)
[@handcraftedaloha](https://www.instagram.com/handcraftedaloha)

ISLAND VINTAGE WINE BAR

Royal Hawaiian Center
808.799.9463 (WINE)
Daily 7:00am - 10:00pm
islandvintagewinebar.com
[@islandvintagewinebar](https://www.instagram.com/islandvintagewinebar)

ISLAND VINTAGE SHAVE ICE**

- Royal Hawaiian Center
808.922.5662
Daily 10:00am - 9:00pm
[@islandvintageshaveice](https://www.instagram.com/islandvintageshaveice)
- Waikiki Beach Marriott Resort
Daily 10:00am - 9:00pm
[@islandvintageshaveice](https://www.instagram.com/islandvintageshaveice)

*Island Vintage Coffee also has locations at Ala Moana Center, Hale'iwa Store Lots, Ko Olina Station, Maui, Hawai'i Island, and Japan.

** Island Vintage Shave Ice also has a location on Maui at Whaler's Village.



mahalo nui loa for your patronage

islandvintagecoffee.com • islandvintagewinebar.com •



HO'OLAUNA ALOHA HULA FESTIVAL GOES LIVE AT WAIKIKI BEACH WALK

Renowned festival returns to live performances
August 21st at Waikiki Beach Walk

Waikiki Beach Walk proudly announces the return of live performances of the **Ho'olauna Aloha Hula Festival** in a special presentation on Sunday, August 21st at their Plaza Stage. It will be the first live presentation of the annual festival since 2019.

The Hula Ho'olauna Aloha hula festival was created in 2002 and organized by JALPAK International Japan to foster friendship through hula while celebrating Japan's love for the hula with live performances in Hawaii by some of Japan's most esteemed hula halau.



Pictured: Kumu Hula Sonny Ching & Kumu Hula Lopaka Igarta with Halau Hula Na Mamo O Pu'uanahulu

It has traditionally been a four-day event and since the breakout of the pandemic it has been virtual, including throughout 2022 with its final virtual presentation scheduled for October 8 and 9.

However, a special condensed edition of the festival will be held live and in person on Sunday, August 21st from 4:30 p.m. to 6:30 p.m. at Waikiki Beach Walk.

“Waikiki Beach Walk is thrilled, pleased and proud to be a significant part of the return to live presentations by this wonderful festival,” said Blaine Kia, kumu and cultural advisor for Waikiki Beach Walk. “It’s an important signal and step forward towards pre-pandemic times, as well as an honor to be able to be able to showcase the art form as it exists in Japan.”

In pre-pandemic times, the Hula Ho’olauna traditionally featured more than a dozen halaus from throughout Japan performing over several event days. This special presentation at Waikiki Beach Walk will be an abridged taste of five halau within a single performance and provide the public a rare opportunity to experience the beauty and diversity of this beloved Hawaiian art form.

“With its long history of support for Hawaiian culture in general and hula in particular, the Waikiki Beach Walk Plaza is the perfect place for this very special event,” said Eiichi Abe, Event Director of Hula Ho’olauna Aloha Committee. “We’re thrilled to resume live performances in Hawaii at such an appropriate, beautiful and perfectly intimate setting.”

Participating hālau and order of appearance are:

4:30pm: Kumu Hula Hokuaulani Nihipali - Special Appearance

5:00pm: Kumu Hula Ed Collier with Halau Hula O Na Pua Kukui

5:30pm: Kumu Hula Sonny Ching & Kumu Hula Lopaka Igarta with Halau Hula Na Mamo O Pu’uanahulu

6:00pm: Kumu Hula Maelia Carter with Halau Hula Ka Ua Noe O Wa’ahila

6:20pm: Lehua Kawaikapuokalani Hewett - Special Guest Appearance

Times and order of appearance are subject to change.

Waikiki Beach Walk is committed to supporting the local community and opportunities to share the Hawaiian culture. The Hawaiian Music Hall of Fame resides at the Waikiki Beach Walk’s Royal Room, and in addition to Mele Hali’a, Waikiki Beach Walk also presents weekly live entertainment each Tuesday from 4:30 to 6 p.m. during “Kū Ha’aheo,” as well as its popular “Ka Lei Hula” program with complimentary hula practice each Sunday morning at 9 a.m. Additional musical performances are added during the Christmas holidays and at special occasions, such as the annual Makalauna, celebrating the life and music of Charles Philip “Gabby” Pahinui.



RESTAURANT SUNTORY
JAPANESE CUISINE

RESTAURANT SUNTORY'S SUSHI TOKIWA DELIGHTS DINERS WITH NEW CHEF KANTO'S OMAKASE DEBUT



Tokiwa represents the pinnacle of sushi culture in taste, technique, presentation, and service with an immersive omakase experience.

Coming from Japan to join the [Restaurant Suntory](#) team in June 2022, Chef Takuya Kanto adds another element of excellence to the restaurant's completely restyled sushi counter, [Tokiwa](#). Chef Kanto learned the secrets of his trade in Hokkaido, which sets the bar for Japanese sushi standards with the freshness and superior quality of ingredients. As an accomplished sushi artisan, he includes even more enticing selections in the omakase menu now served at Restaurant Suntory. Omakase gives the sushi chef creative freedom by entrusting the selections for the multi-course meal entirely to them, with no ordering on the part of the diner.

Chef Kanto trained under one of Japan's most notable Edomae-style sushi masters, Chef Tsutomu Shimamiya. Chef Kanto's 10-year sushi career includes years at Chef Shimamiya's restaurants: Sushizen's Michelin star flagship restaurant as well as its high-end Ginza location, which is regularly frequented by celebrities. Sushizen is a Hokkaido-based group of sushi restaurants and famous throughout Japan.

Chef Kanto's first omakase menu at Tokiwa features seasonal ingredients fresh from Hokkaido and will be offered through August. When asked what local ingredients he is looking forward to using, he said that he hopes to incorporate spot prawn and local abalones.



Previously closed Sundays and Monday afternoons, sushi counter Tokiwa is now open every day of the week. Lunch courses start at \$100 and dinner ranges from \$250. Reservations can be made online through [RESY](#) but are also accepted over the phone at **(808) 922-5511**.

Get “Laki” At Royal Hawaiian Center This August

“Laki” Bags are 30% off!

AUGUST 12 - 13, 2022

For **two days only**, shoppers are invited to participate in Royal Hawaiian Center’s new “Laki” Bag promotion. “Laki” means “Lucky” in Hawaiian. Purchase a “Laki” bag from participating merchants and receive a minimum of 30% off the original selling price!

For updates on new stores and restaurants, follow us on social media (@royalhwncr) or visit our website at

www.royalhawaiiancenter.com/events.



Lā Keiki Day: Entertainment, Children’s Games, and more!

AUGUST 14, 2022

On August 14, you and your ‘ohana are invited to attend Lā Keiki Day. Entertainment kicks off at 10:30am with a performance by Kenny Endo’s Taiko Center of the Pacific followed by games for keiki, balloons, prizes and more. The event is open to the public and free to attend! First come, first serve! Social distancing and face masks are recommended but not mandatory. For a full list of events and to learn more, visit

www.royalhawaiiancenter.com/events.

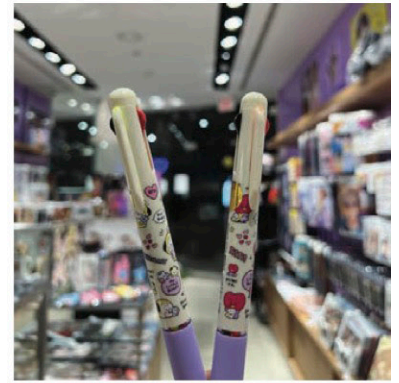
Say Aloha to New Stores, K-pop Friends & Broome St. General

K-POP FRIENDS

K-pop fans, unite! K-pop Friends is coming to Royal Hawaiian Center this August bringing high-quality K-pop and K-drama inspired gifts, merchandise, and memorabilia to Waikiki. Here, shoppers can find iconic K-pop light stick in support of their favorite band. K-pop Friends also offers a diverse selection of albums, the perfect addition to any summer jams collection. Open daily 11:00am-9:00pm. Building C, Level 1. Follow K-pop Friends on Instagram @kpopfriendshawaii.



• K-pop Friends BT21 phone cases



• K-pop Friends BT21 multi-pens

BROOME ST. GENERAL

This August, Broome St. General will open its very first Hawaii location, featuring a curated selection of luxury goods from around the world. The gourmet grocery store offers specialty foods, coffees, teas and read-made bites amid home décor and other accessories. Open daily 11:00am-9:00pm. Building B, Level 1. Follow Broome St. General on Instagram @broomestgeneralwaikiki.



• Broome St. General will open at the Royal Hawaiian Center in August.



• Premium Beach Umbrella, Bottle Green

For updates on new stores and restaurants, follow us on social media (@royalhwncr) or visit our website at www.royalhawaiiancenter.com/events.



Tote Bag

Pouch

Lei Aloha Gift with Purchase

AUGUST 15 - SEPTEMBER 30, 2022

Starting August 15 through September 30, spend a minimum of \$300 to receive a free splashproof pouch or spend \$1,000 to receive a free splashproof tote uniquely designed as a collaboration between Kākou Collective and Royal Hawaiian Center. Kākou Collective is the studio of Native Hawaiian surface pattern designer and illustrator Kea Peters. Her mission is to share the love and knowledge of local culture in Hawai'i through original artwork and quality products. Receipts from purchases can be redeemed at Helumoa Hale Guest Services on the first level of Royal Hawaiian Center while supplies last. Some restrictions apply. For additional details, please visit www.royalhawaiiancenter.com.

AUGUST



‘AUKAKE 2022 | HELU ‘EWALU

Complimentary Cultural Programming

LĀ PULE SUNDAY	PŌ‘AKAHI MONDAY	PŌ‘ALUA TUESDAY	PŌ‘AKOLU WEDNESDAY	PŌ‘AHĀ THURSDAY	PŌ‘ALIMA FRIDAY	PŌ‘AONO SATURDAY
	1 11AM - 12PM HH ‘Ukulele Lesson	2 11AM - 12PM G1 Hula Lesson 5:30 PM - 6:30PM G1 Kawika Trask Trio	3 11AM - 12PM A2 Lauhala Lesson 5:30 PM - 6:30PM G1 Pu‘uhonua	4 12PM - 1PM G1 Keiki Hula Lesson 5:30PM - 6:30PM G1 Ha‘eha‘e Girls	5 12PM - 1PM A2 Lei Making Lesson 5:30 PM - 6:30PM G1 Malu Productions	6 3:30PM - 4:30PM G1 Keiki Hula 5:30 PM - 6:30PM G1 Hula Kahiko
	8 11AM - 12PM HH ‘Ukulele Lesson	9 11AM - 12PM G1 Hula Lesson 5:30 PM - 6:30PM G1 Kawika Trask Trio	10 11AM - 12PM A2 Lauhala Lesson 5:30 PM - 6:30PM G1 Pu‘uhonua	11 12PM - 1PM G1 Keiki Hula Lesson 5:30PM - 6:30PM G1 Ha‘eha‘e Girls	12 12PM - 1PM A2 Lei Making Lesson 5:30 PM - 6:30PM G1 Malu Productions	13 3:30PM - 4:30PM G1 Keiki Hula 5:30 PM - 6:30PM G1 Hula Kahiko
	15 11AM - 12PM HH ‘Ukulele Lesson	16 11AM - 12PM G1 Hula Lesson 5:30 PM - 6:30PM G1 Kawika Trask Trio	17 11AM - 12PM A2 Lauhala Lesson 5:30 PM - 6:30PM G1 Pu‘uhonua	18 12PM - 1PM G1 Keiki Hula Lesson 5:30PM - 6:30PM G1 Ha‘eha‘e Girls	19 12PM - 1PM A2 Lei Making Lesson 5:30 PM - 6:30PM G1 Malu Productions	20 3:30PM - 4:30PM G1 Keiki Hula 5:30 PM - 6:30PM G1 Hula Kahiko
	22 11AM - 12PM HH ‘Ukulele Lesson, HH	23 11AM - 12PM G1 Hula Lesson 5:30 PM - 6:30PM G1 Kawika Trask Trio	24 11AM - 12PM A2 Lauhala Lesson 5:30 PM - 6:30PM G1 Pu‘uhonua	25 12PM - 1PM G1 Keiki Hula Lesson 5:30PM - 6:30PM G1 Ha‘eha‘e Girls	26 12PM - 1PM A2 Lei Making Lesson 5:30 PM - 6:30PM G1 Malu Productions	27 3:30PM - 4:30PM G1 Keiki Hula 5:30 PM - 6:30PM G1 Hula Kahiko
	29 11AM - 12PM HH ‘Ukulele Lesson	30 11AM - 12PM G1 Hula Lesson 5:30 PM - 6:30PM G1 Kawika Trask Trio	31 11AM - 12PM A2 Lauhala Lesson 5:30 PM - 6:30PM G1 Pu‘uhonua	/	LOCAL INFORMATION A2: Building A, 2nd Floor G1: The Grove Stage HH: Helumoa Hale For more information, call Helumoa Hale Guest Services. (808 922-2299)	

All programming is subject to change or cancellation
 Contact Helumoa Hale Guest Services at 808.922.2299 or text us at 808.425.9088 for the latest information. Standard parking rates apply.

★ Dine-In

★ Take-Out

★ Delivery

★ Online Ordering

★ Catering

★ Parties/Events

★ Awesome BBQ

★ Happy Hour

★ TV Sports

★ Indoor/Outdoor Seating

★ Live Entertainment

Hardy



THE COMEDY PIT
PRESENTS

JESSICA MICHELLE SINGLETON

AUG 25-28, 2022

THURS-SUNDAY

★ LIVE AT  ★

DOORS 7PM
SHOW 8PM

\$20 ADMISSION +
2 DRINK MINIMUM
OR 1 APPETIZER/PERSON

2299 KUHIO AVE
@ 1ST FLOOR OF
THE LAYLOW HOTEL



AS SEEN ON



((SiriusXM))



**#1 COMEDY ALBUM &
GRAMMY NOMINATED**

VERY LIMITED SEATING.
RESERVE YOUR TABLE NOW!



@ TEX808.COM

**GOOD MORNING, Y'ALL!
JOIN US FOR
WEEKEND BRUNCH!**



We are now serving Weekend Brunch every Saturday & Sunday, 9am-2pm. Choose from local favorites like Eggs, Portuguese Sausage & Rice or try Tex808 Signature dishes like our Brisket Loco Moco made with our drool-worthy, fall-off-the-bone BBQ brisket. What a perfect way to celebrate the weekend!

NOW OPEN IN WAIKIKI @ THE LAYLOW • 2299 KUHIO AVENUE

SUN-THU 11AM-11PM • FRI & SAT 11AM-MIDNIGHT

MON - TRIVIA NIGHT • TUE - TACO TUESDAYS • WED - OPEN MIC NIGHT

FRI - THE COMEDY PIT • CHECK ONLINE FOR LIVE MUSIC SCHEDULE

tex808.com • @tex_808 • 808.888.2495

the Waikiki

SHOPPING PLAZA

August 2022

Industry Parking

Industry workers with valid proof of employment in Waikiki may purchase discounted industry validations to park in Waikiki Shopping Plaza for \$10 (maximum of 10 hours).

For more information regarding the discounted validations, please visit our website: waikikishoppingplaza.com/industry



Shopping

ABC Stores (WBP)
Belle Vie
H&M
Hamilton Boutique
HiLife
Honolulu Cookie Company
LC Creations

Lono God of Peace
Lululemon
Maxi Hawaiian Jewelry
Pure Stone
Quiksilver
Sephora

Tiki Products
USPS
Victoria's Secret
Wahing Jewelry
Waikiki Trolley Kiosk
World Assistance Services 

Dining

Buho Cantina
Royal Lobster
Sky Waikiki
Starbucks
Tanaka of Tokyo

Parking

Waikiki Shopping Plaza
\$3 per half hour
\$15 Daytime Special: Up to 10 hours for \$15
if you enter the lot from 6:30am - 4:30pm

Waikiki Business Plaza
\$3 per half hour

Available in the Waikiki Business Plaza & Waikiki Shopping Plaza during parking lot operating hours.

The Waikiki Business Plaza & Waikiki Shopping Plaza parking lot and building operating hours are from 6:30am – 12am.
Management Office hours are from 9am – 4pm.

2250 Kalakaua Ave, Honolulu, HI 96815
waikikishoppingplaza.com

WOLFGANG'S

S T E A K H O U S E

— BY WOLFGANG ZWIENER —

**NOW ALSO
SERVING
BREAKFAST
DAILY
7AM-11AM!**

BREAKFAST MENU

**RESERVATIONS:
808.922.3600
opentable.com**

STEAK & EGGS

— U.S.D.A PRIME, DRY-AGED —

In our own aging box. All steaks include two eggs any style per person and rosemary potatoes.

Petite Striploin	54. ⁹⁵	Rib Eye Steak	105. ⁹⁵
Steak for Two	155. ⁹⁵	Lamb Chop	69. ⁹⁵
Steak for Three	233. ⁹⁵	Veal Chop	63. ⁹⁵
Steak for Four	311. ⁹⁵	Filet Mignon	109. ⁹⁵
Prime N.Y. Sirloin	87. ⁹⁵	Petite Filet	58. ⁹⁵

OMELETS

Served with Choice of Rosemary Potatoes, Rice or Toast

Classic 18.⁹⁵

Thick Cut Bacon, Bell Peppers, Caramelized Onions, Mushrooms, Cheddar

House Special 18.⁹⁵

Ask your server for our savory details

Build Your Own 19.⁹⁵

Choice of Three Items: Thick Cut Bacon, Portuguese Sausage, Mushrooms, Spinach, Bell Peppers, Tomato, Caramelized Onions, Olives, Jalapeños, Cheddar, American cheese, Feta

EGGS BENEDICT

Served with a Choice of Rosemary Potatoes or Mixed Greens Salad

Classic Benedict 15.⁹⁵

Thick Cut Bacon, Poached Eggs, Toasted English Muffin, Hollandaise Sauce

Salmon Benedict 15.⁹⁵

Smoked Salmon, Poached Eggs, Toasted English Muffin, Hollandaise Sauce

Crab Cake Benedict 28.⁹⁵

Crab Cake, Poached Eggs, Toasted English Muffin, Hollandaise Sauce

Vegetarian Benedict 13.⁹⁵

Fresh Spinach and Tomato, Poached Eggs, Toasted English Muffin, Hollandaise Sauce

Filet Benedict 29.⁹⁵

Wolfgang's Petite Filet, Poached Eggs, Toasted English Muffin, Hollandaise Sauce

SWEETS

Pancakes 13.⁹⁵

Choice of Plain or Banana Macadamia Nut Pancakes, Toasted Macadamia Nuts

French Toast 13.⁹⁵

Thick Slices of Hawaiian Sweet Bread, Whipped Cream, Blueberries, Topped with Powdered Sugar

Belgian Waffles 13.⁹⁵

Served with Strawberries, Bananas, Blueberries

SAVORY

Loco Moco 19.⁹⁵

Beef Patty, Steamed Rice, Sunny Side Up Eggs, House-Made Gravy

Breakfast Wrap 18.⁹⁵

Ham, Eggs, Hash Browns, Peppers, Tomatoes, Onions, Cheddar Cheese in a Flour Tortilla

Waffles / Fried Chicken 18.⁹⁵

Two Belgian Waffles, Crispy Fried Chicken, Maple-Butter Syrup

Avocado Toast 14.⁹⁵

Avocado, Multi-Grain Bread, Eggs Any Style, Mixed Greens Salad

Salmon Bagel 16.⁹⁵

One medium bagels, split and toasted, cream cheese, softened, capers, drained and divided, thinly sliced smoked salmon or lox thinly sliced red onion, Freshly ground black pepper

PASTRY BASKET / BAGEL / TOAST

Pastry 4.⁹⁵

Chef's Assortment of Pastries: Croissants, Danishes, Muffins

Bagel / Toast 4.⁹⁵

Choice of Bagel Plain or Everything. Toast: White, Rye, Whole Wheat, Sourdough, Multi-Grain — Served with Butter, Local Lilikoi, Strawberry Jams or Cream Cheese

YOGURT / FRUIT

Yogurt 12.⁹⁵

Greek Yogurt, Bananas, Berries, House-Made Granola, Chia Seeds

Granola with Honey 10.⁹⁵

House-Made Granola, Local Honey

Fruit Bowl 12.⁹⁵

Hawaiian Pineapple, Melon, Berries, Local Honey

SIDES

Sizzling Thick Cut Bacon 5.⁹⁵

Rosemary Potatoes 5.⁹⁵

Two Eggs Any Style 5.⁹⁵

BAR / BEVERAGES

Mimosa 14.⁹⁵ **Cappuccino** 7.⁹⁵

Bloody Mary 13.⁹⁵ **Latte** 7.⁹⁵

Aperol Spritz 13.⁹⁵ **Pineapple Juice** 4.⁹⁵

Espresso 5.⁹⁵ **Orange Juice** 8.⁹⁵

Coffee / Tea 4.⁹⁵ **Grapefruit** 8.⁹⁵

Milk 4.⁹⁵





WAIKĪKĪ IMPROVEMENT ASSOCIATION

Wikiwiki Wire is published on the first Monday of each month. If you would like to share your news with other members, please send your info to: editor@waikikiimprovement.com.

Submission Deadline

Waikīkī-related news and information submitted by members (or their PR agencies) for the Wikiwiki Wire newsletter should be received no later than **5 PM MONDAY, ONE WEEK PRIOR** to the newsletter's publication and distribution on the first Monday of each month.

News & Stories: Please submit any Waikīkī-related stories/articles as a Word doc and include photos to accompany stories/ articles. For best results, please upload photos as a separate JPEG attachment - maximum 2 MB each image.

Flyers/PDFs: Waikīkī-related flyers are welcome but must look like advertising flyers and not press releases. Please format flyers to an 8.5" x 11" size and submit them in a PDF format.

Press Releases: Please submit Waikīkī-related press releases as a Word doc. Press Releases that do not fit within one page of the Wikiwiki Wire newsletter will be returned for editing.

Photos: For best results, please upload photos as a separate JPEG attachment - maximum 2 MB each image.



WAIKĪKĪ IMPROVEMENT ASSOCIATION

We are a cross-section of business, government and the community; our members care about the future of this special place - Waikīkī.

For more than 40 years, the Waikiki Improvement Association has remained true to its objective: to improve, enrich and beautify Waikīkī for the benefit of residents and visitors alike and to promote conditions conducive to the economic and cultural good and for the betterment of the entire community.

HAWAIIAN DIACRITICAL MARKS

Waikīkī Improvement Association recognizes the use of diacritical marks (i.e., glottal stop (ʻ), macron (ā) in place names of Hawaiʻi, such as Waikīkī and Kalākaua Avenue and will include them whenever possible. We also respect the individual use (or not) of these markings for names of organizations and businesses.

There will also be times when we may not have a chance to add or change the markings in all of the articles submitted and when that happens, e kala mai.